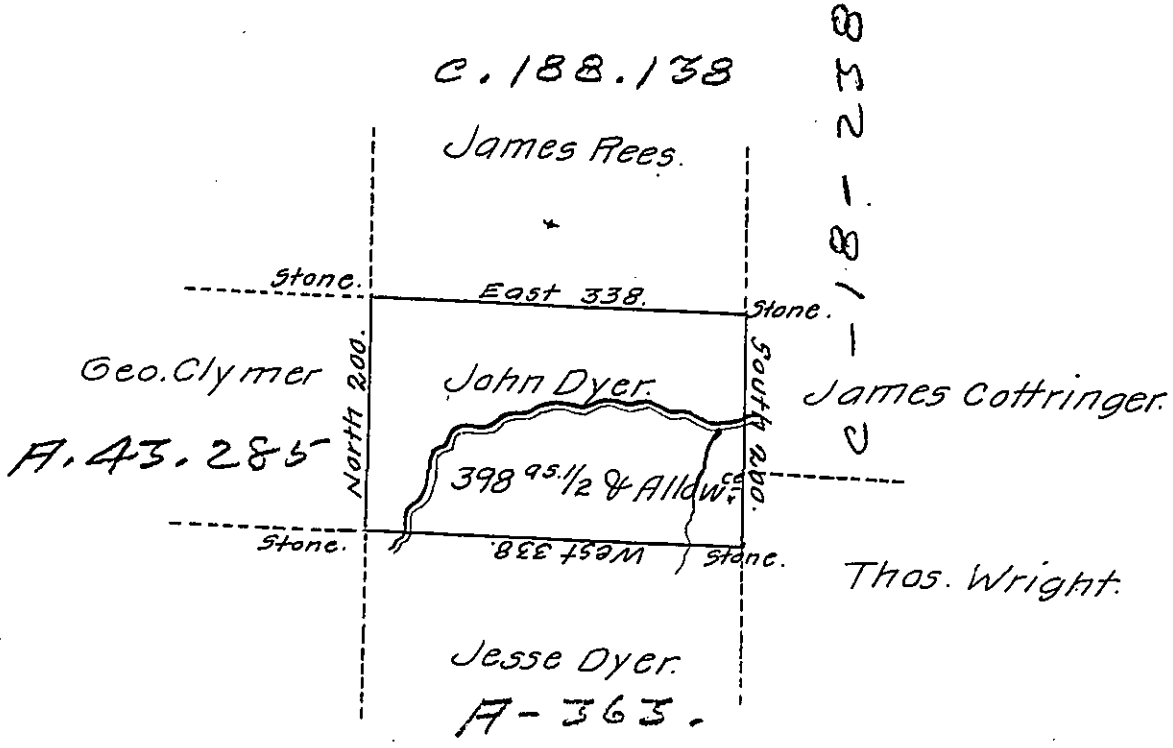


Denison -
Luzerne



A draft of a tract of land called — situate on the waters of
Lehi-Joining land surveyed for Jesse Dyer in the County of Luzerne
containing Three hundred and ninety eight acres $\frac{1}{4}$ & allowance
of six $\frac{1}{2}$ Cent. for Roads &c. Surveyed for John Dyer 10th. Day of
June 1792, in pursuance of a warrant dated the 4th. Day of
April, 1792.

To Daniel Brodhead, Esqr., } by Wm. Gray, D.S.
Survey Genl. }

IN TESTIMONY that the above is a copy of the original remaining on file in
the Department of Internal Affairs of Pennsylvania, made
conformably to an Act of Assembly approved the 16th day of
February, 1833, I have hereunto set my Hand and caused
the Seal of said Department to be affixed at Harrisburg,
this...seventeenth day of July...1911.

Henry Howell
Secretary of Internal Affairs.